



Maja's Heirlooms

Trisha

Gathered/not smocked

Directions for size 1-4 (5-8, 10-16)

- Fold sleeve pattern in half matching the neck edge. Pin the pattern 3" (4", 5") from the fold through both thicknesses. Figure 1& 2.
- Fold the Upper Front in half matching the neck edge. Pin the pattern 1 1/2" (2", 2 1/2") from the fold through both thicknesses of the pattern. Figure 3. Unfold the pattern and re-sketch the bottom curve as indicated in figure 4.
- Fold the Upper Back in half matching the neck edge. Pin the pattern 1 1/2" (2", 2 1/2") from the fold through both thicknesses of the pattern. Figure 3. Unfold the pattern and re-sketch the bottom curve as indicated in figure 4.

Sleeve hem:

- To make the casing for the sleeve hem, press up 1/4" then 1". Stitch casing leaving a 1/2" opening to insert the elastic. Stitch again all the way around, 1/2" from the folded edge. Insert elastic in the casing and stitch the ends of the elastic together.

Cut 2 pieces of 1/4" elastic for the sleeve:

Size	Elastic
1-2	9"
3-4	9 1/2"
5-6	10"
7-8	10 1/2"
10-12	11 1/2"
14-16	12 1/2"

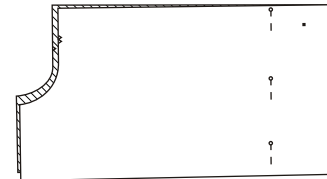


Figure 1

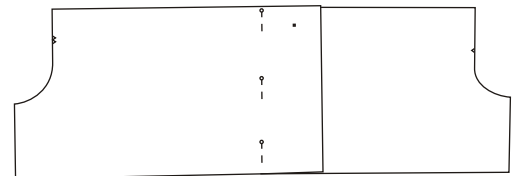


Figure 2

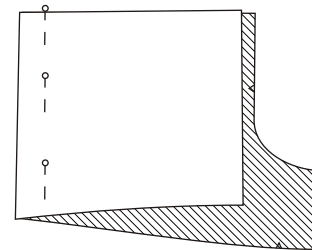


Figure 3

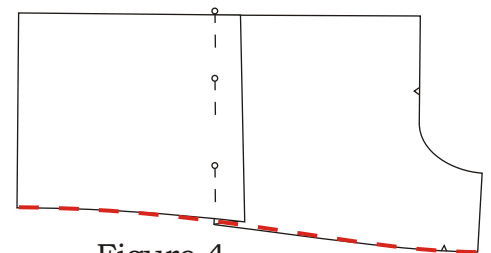


Figure 4

Fabric requirements

	1-4	5-8	10-16
45" fabric	1 yd	1 1/2 yd	1 5/8 yd
60" fabric	3/4 yd	1 yd	1 1/3 yd

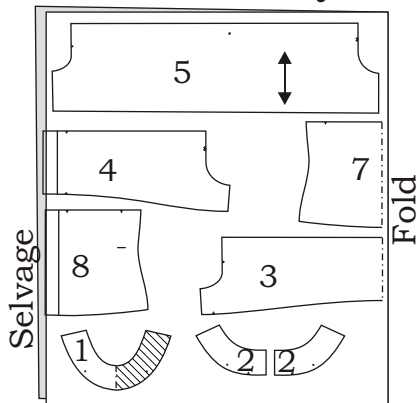
See page 2 for Cutting layouts



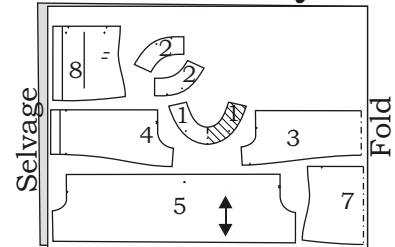
Maja's Heirlooms

Cutting layout

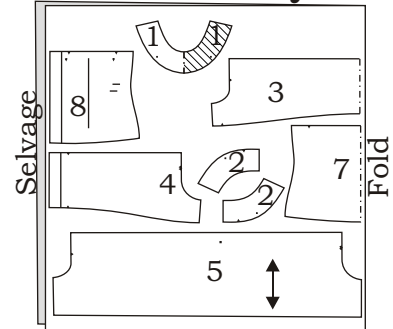
Sizes 1-4 - 45" layout



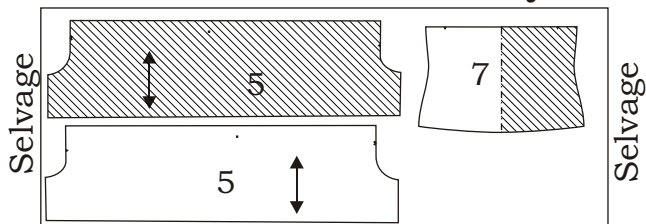
Size 1-4 - 60" layout



Size 5-8 - 60" layout



Sizes 5-8 and 10-16 - 45" layout



Size 10-16 - 60" layout

